

MAX™ Data Collection Monitor



Installation Manual

Version 2016

MAX™ (SQL Server) Data Collection Monitor - Installation

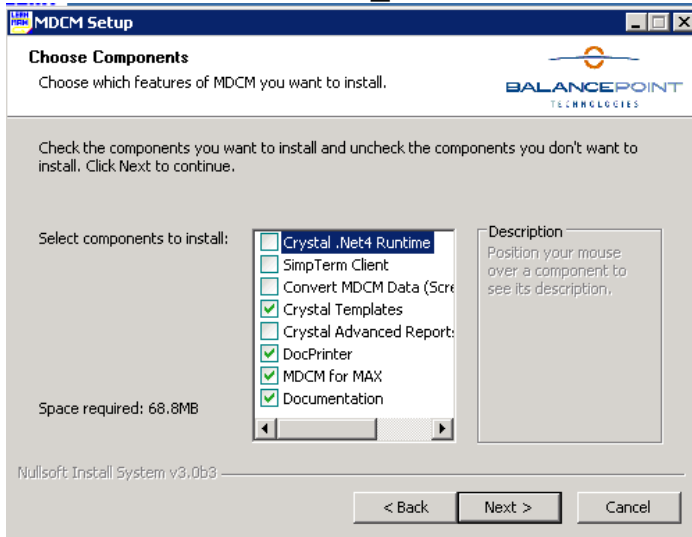
Installation

The MAX Data Collection Monitor requires Windows XP (sp3) or newer, which is connected to a network using TCP/IP protocols.

Required:

- 1) The SQL server name has to be the same name used to create the license hash.
- 2) We need to have 2 DLL's copied from MAX client folder into the application folder. The application tries to copy them if missing or old but sometimes is prevented and they will need to be manually copied:
 - a. C:\exact\rmclient\efw\ERMRemCl.dll
 - b. C:\exact\rmclient\efw\ EXACTRMEnc.dll
- 3) Make sure the MAX client runs on same PC. If MAX has an issue the application will also.
- 4) Sometimes 2 MAX DLL's need to be registered:
 - a. C:\exact\rmclient\efw\EXACTRMDEV.DLL
 - b. C:\exact\rmclient\efw\MAXUPDATEXML.DLL
- 5) The user referenced in the Data Settings needs read access to the EXACTMAX database but does not need any further rights to individual company databases.
- 6) DotNet Framework version 4(Full) or newer

Run DataCollv2014MAX5_5.exe and select desired components:



Based on the items checked the following folders will be installed:

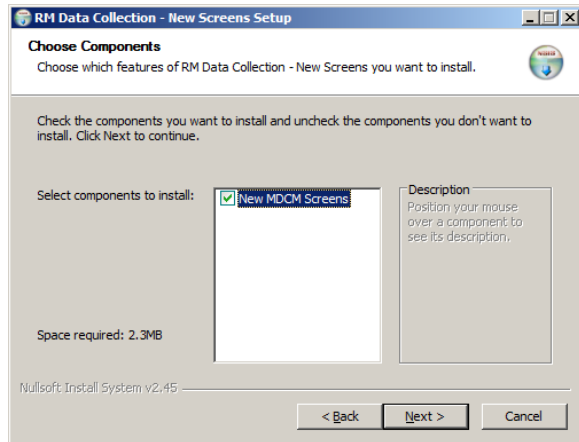
Simplterm Client	C:\Program Files (x86)\BalancePoint\MDCM\SimpTerm
Convert MDCM Data	Desktop Icon
Crystal Templates	C:\Program Files (x86)\BalancePoint\MDCM\Triggers
Crystal Advanced	C:\Program Files (x86)\BalancePoint\MDCM\AdvancedCrystals
DocPrinter	C:\Program Files (x86)\BalancePoint\MDCM\DocPrinter
MDCM	C:\Program Files (x86)\BalancePoint\MDCM
Documentation	C:\Program Files (x86)\BalancePoint\MDCM\Tools\Documentation

MAX™ (SQL Server) Data Collection Monitor - Installation

New Site:

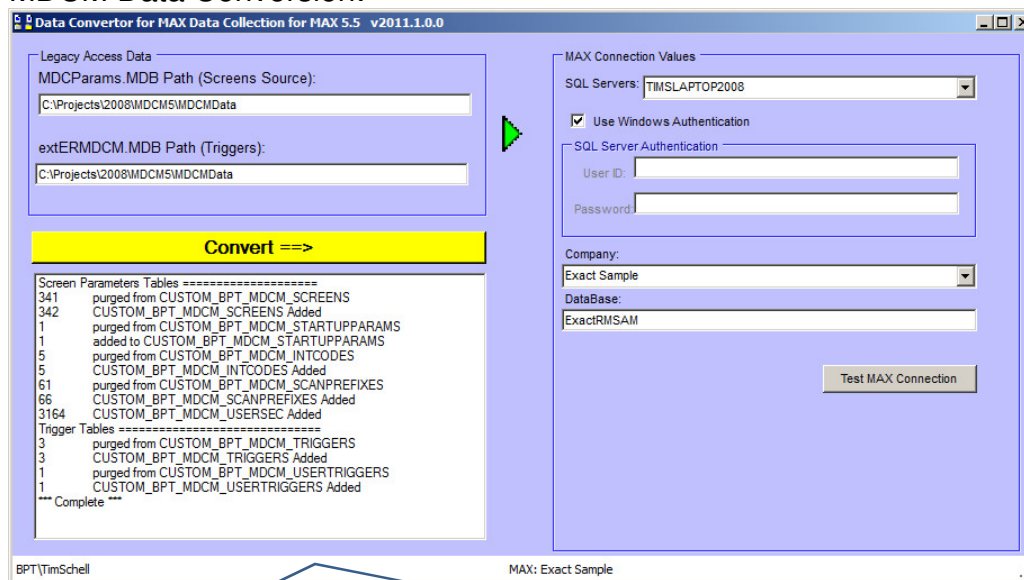
If this is a new installation run [NewMDCMScreens.EXE](#) to load your configuration. Select the same directory that you used to install the application.

Install new screens: NewMDCMScreens.exe



If you are upgrading from a prior version of Data Collection, select Convert MDCM Data from the install menu. This will include the MDCM Data Conversion utility in the install and add an Icon to the desktop.

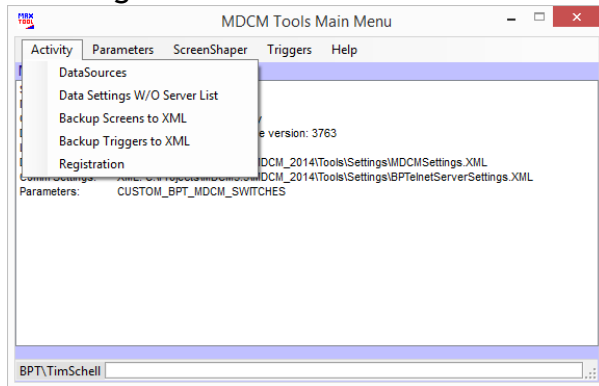
MDCM Data Conversion:



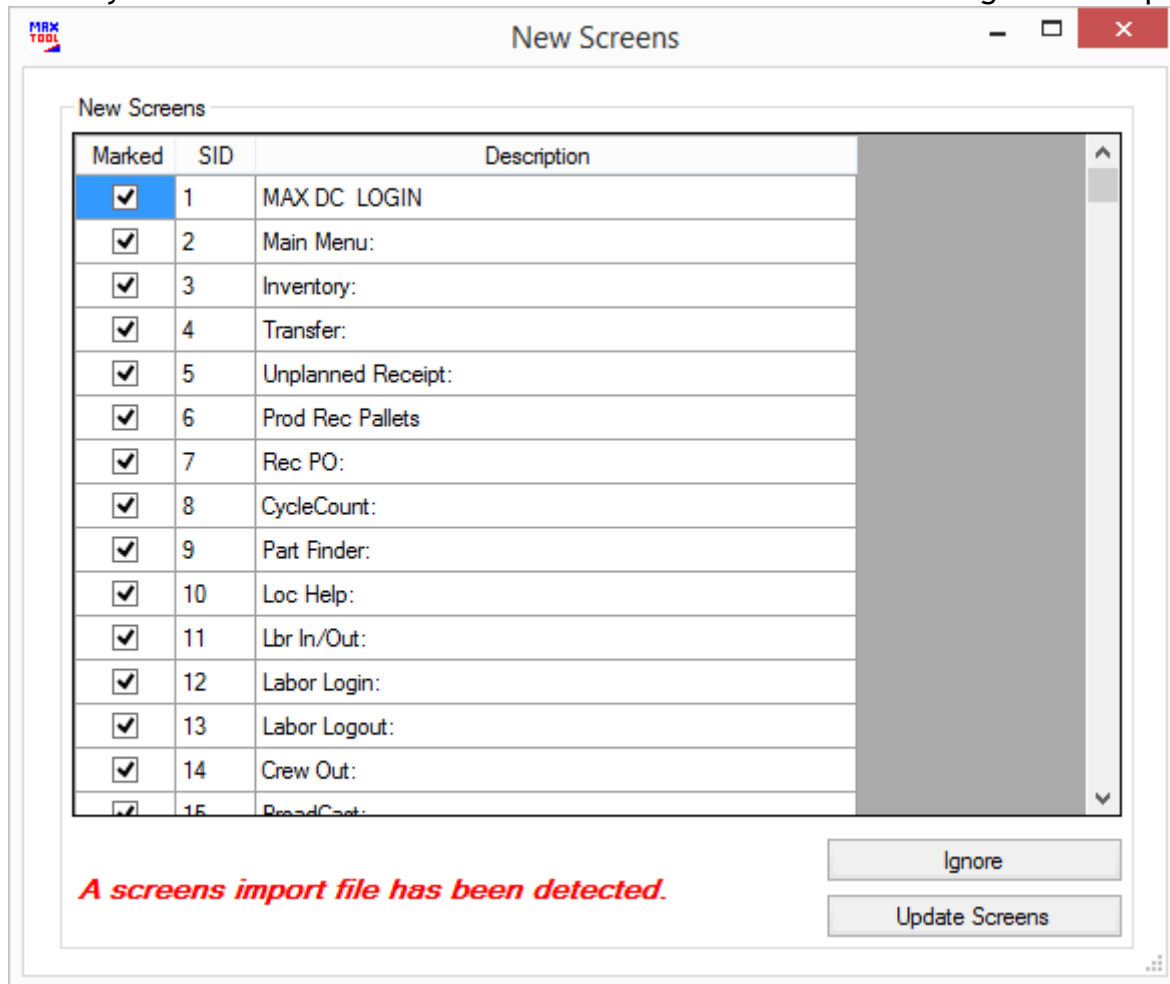
1. Select the folders containing the screens used by earlier versions of Data Collection screens (MDCParams.mdb) and triggers (extERMDCM.mdb).
2. Select the MAX server, credentials, and company database.
3. Click on Convert to create the new tables in the MAX database and copy all the data from the two Access databases.

MAX™ (SQL Server) Data Collection Monitor - Installation

The **Tools** Utility is used to administer parameters and options for MDCM with the following functions:

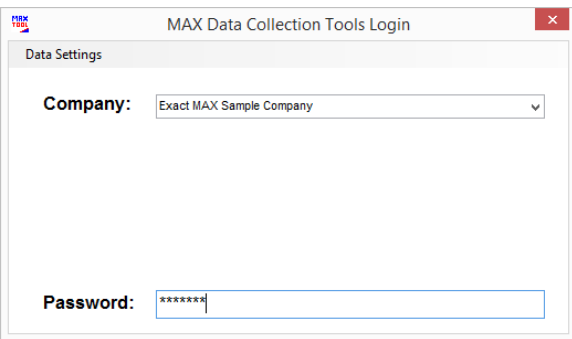
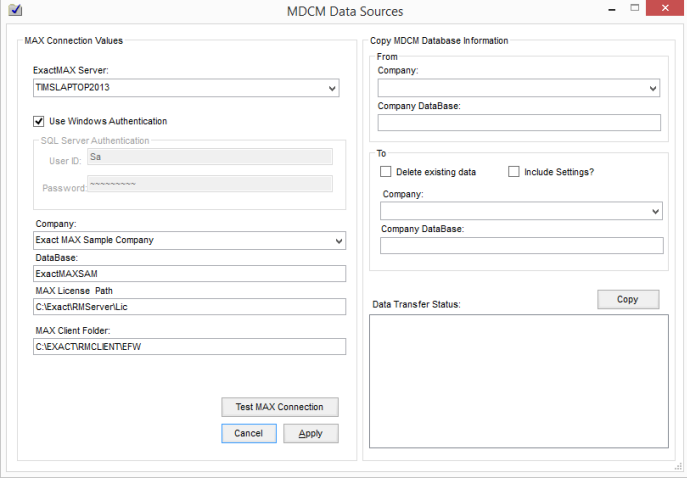
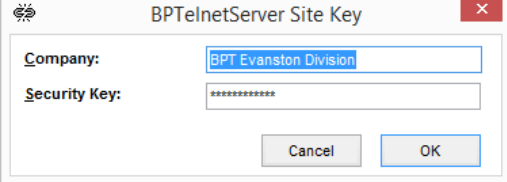
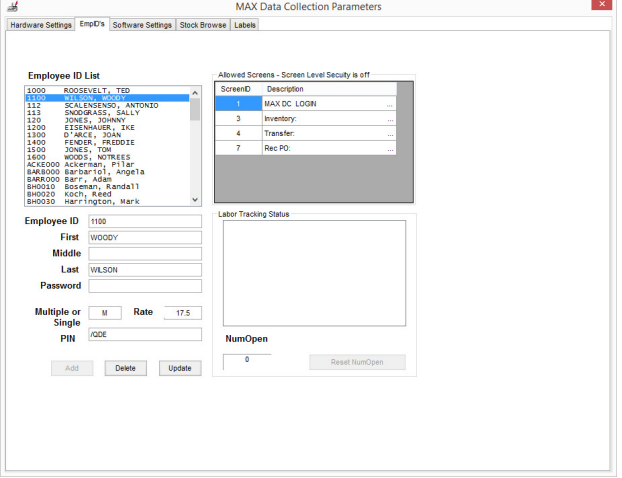


When you start The Tools it will detect new screens which can be ignored or updated.

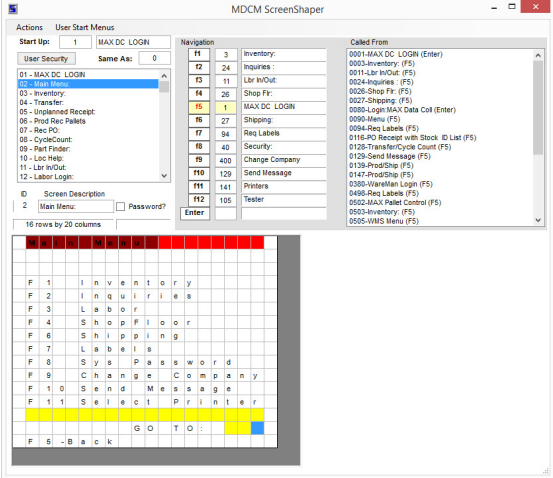
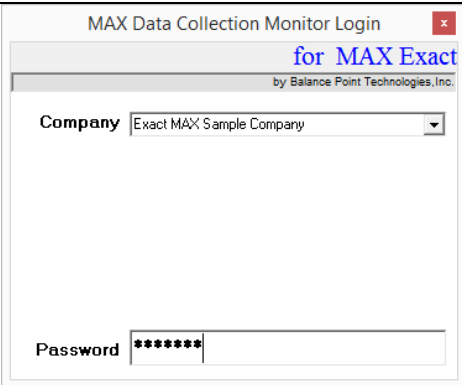
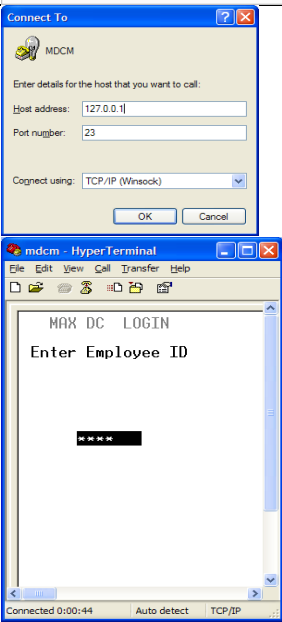


MAX™ (SQL Server) Data Collection Monitor - Installation

Ten Implementation Steps: after the software has been installed the following steps are required to make it functional. To begin, start the MDCM Tools.

<p>1</p>	<p>Login - default password is CYCLONE</p>	
<p>2</p>	<p>Select MAX Server, credentials, and company database.</p> <p>The screens and triggers can be copied from company database to another. These tables reside in the individual company databases and are required.</p>	
<p>3</p>	<p>Register the software. You should have received a registration key which activates the software.</p>	
<p>4</p>	<p>Users:</p> <p>1) Employee ID's from MAX EMPLOYEE_MASTER OR 2) MAX Users</p> <p>If you do not have MAX Labor Tracking then you will need to use the EmplD's maintenance tab to enter the users.</p> <p>You can also login using MAX user and password(optional)</p>	

MAX™ (SQL Server) Data Collection Monitor - Installation

<p>5</p>	<p>Screen startup, formats, navigation and security. The screens will be functional as-is, but can be modified using the ScreenShaper tool.</p> <p>“Start UP” - indicates the first screen that the client user will see.</p> <p>“Enter” - indicates on Start Up screen what the next screen should be.</p>	
<p>6</p>	<p>Start the Monitor.</p> <ol style="list-style-type: none"> 1. Select the company. 2. The Default Password is CYCLONE. 	
<p>7</p>	<p>Connect a Client. HyperTerminal which comes with Windows can be used as a client as can numerous other terminal emulation clients.</p> <p>MDCM uses function keys 1 -12 for screen navigation. HyperTerminal requires that num lock to be on for the keys to work.</p>	

MAX™ (SQL Server) Data Collection Monitor - Installation

8	Training: ScreenShaper, Parameters, Triggers and User.	
9	Pilot Test: Labels and procedures. Where are the bar codes coming from? When, where and how are labels generated?	
10	Go Live	

Please see the User's Manual for more information.

Support:

- 1) <http://www.maxtoolkit.com> MAXTools Support (Requires a User / Password)
- 2) support@bptechnologies.com
- 3) 847 328-7911
- 4) MAX tech Support 800 number

Support Site:

The screenshot shows the MAX Toolkit website. At the top, there is a navigation bar with links for Home, Solutions, Support, Events, About, and Contact. The main content area features a large blue banner for "MAX ERP Software" with a "Get Technical Support" button and a "Request a Demo" button. Below the banner, there are sections for "FEATURED SOLUTIONS" including "Advanced Forecast" and "Consignment Orders", and a "Newsletter Signup" form with fields for Email, First Name, and Last Name.

MAX™ (SQL Server) Data Collection Monitor - Installation

Updating Screens

The ScreenShaper tool will look in the directory for MDCMScreens.XML which will contain a table called SidNav which has in it copies of any new screens which may have been created. All screens in this table will be imported into CUSTOM_BPT_MDCM_SCREENs to be used by the MAX Data Collection Monitor. Navigation for existing screens will be kept. The MDCMScreens.XML will be MOVED TO A \Processed folder once it has been imported.

Changing Screen Fields

To change the attributes of a field, place the cursor on the field and double click. To lengthen or move a field, click on the “Remove” button. Add the field back by highlighting the cells and hitting control /E.

SELECTION PROPERTIES

Display :

Bold Password Underline Reverse Video

Input Field

Data Type :

Numeric Alphanumeric Alpha Only

Field Identifier

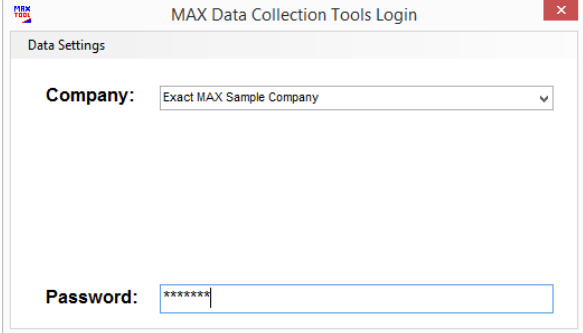
N/A Part ID Quantity Stock Other1 Other3

Lot ID Serial ID Order Other2 Other4

Cancel Remove OK

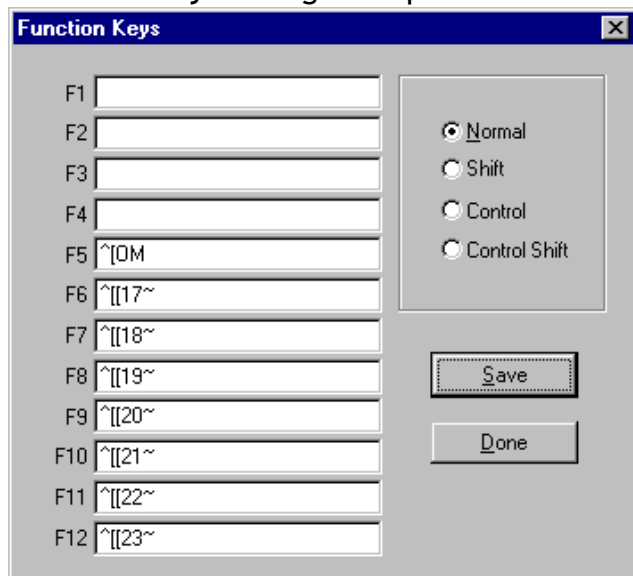
MAX™ (SQL Server) Data Collection Monitor - Installation

Moving to a New Computer:

1	Run DataCollv2014MAX5_5.exe on the new computer.	
3	<p>On new computer, start MDCM Tools Login - default password is CYCLONE</p> <p>Copy the two settings XML documents from \Tools\settings on the old server to the same location on the new.</p> <ul style="list-style-type: none">• BPTelnetServerSettings.XML• MDCMSettings.XML <p>Triggers are stored in the MAX company data database. You will need to review the triggers for file names and locations and available printer.</p>	
4	Review the requirements above.	
5	If the new IP address is different than the current IP, update the clients to connect to the new address (or name.)	

Simpterm (Shareware) Telnet Client

Function Keys: Using the Options/Function Keys Tab - make the following entries:



Function Key	Input Field
F1	
F2	
F3	
F4	
F5	^[OM
F6	^[17~
F7	^[18~
F8	^[19~
F9	^[20~
F10	^[21~
F11	^[22~
F12	^[23~